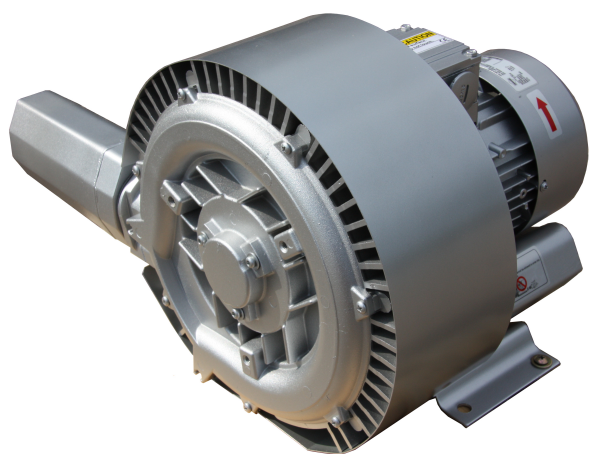


# EUROBLOWER

Reliable, quick and  
easy to order



## Sidechannel blower double stage EB3 5230 & EB3 5240



The standard Euroblower design, with housing and impeller made of aluminum alloy, is a direct drive configuration, with a dynamically balanced impeller, fitted directly on the motor shaft. The impeller rotates inside of the stator housing with a very small clearance. Larger models include housings in cast iron. The absence of lubricants guarantees a 100% oil free vacuum or compression. Construction features of the Euroblower side channel blower are the very reliable operation and low maintenance. Euroblower blowers are directly driven, impellers fixed directly on the drive shaft. Impeller bearing is installed in the front cover and easily to assemble and disassemble. Machines are small and lightweight. The blowers are already available with differential pressures up to 700 mbar.

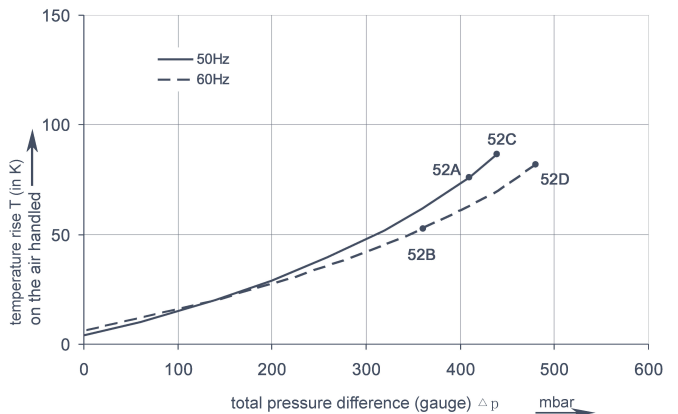
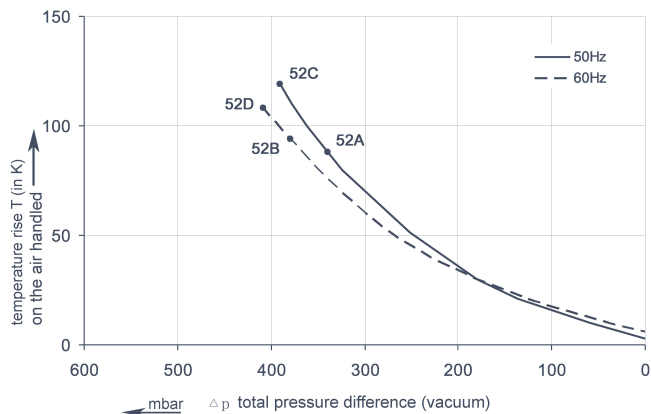
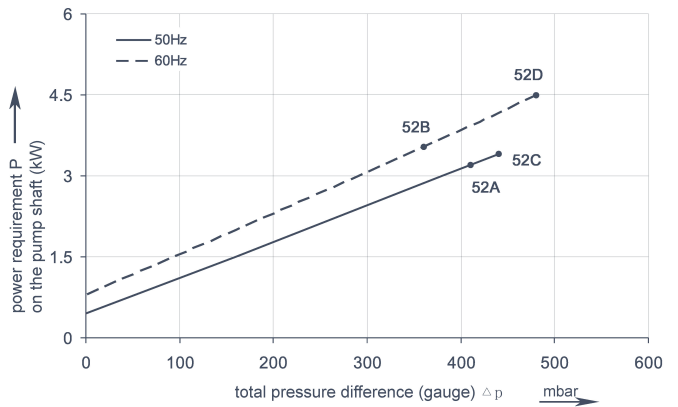
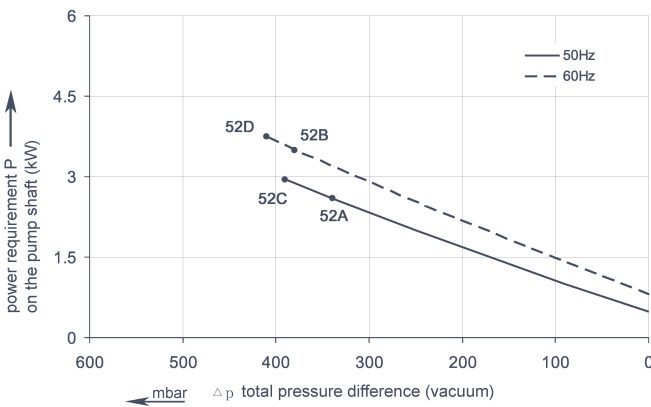
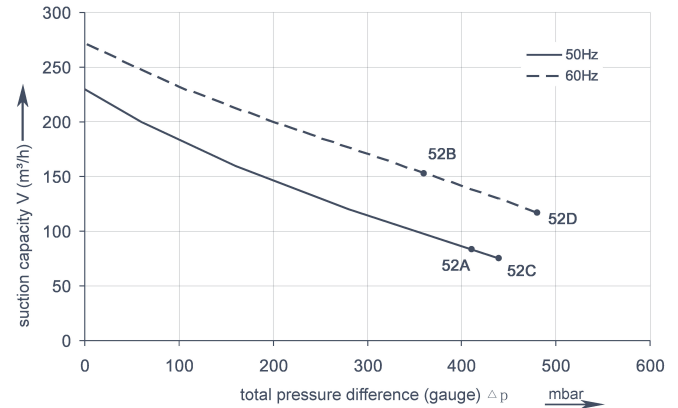
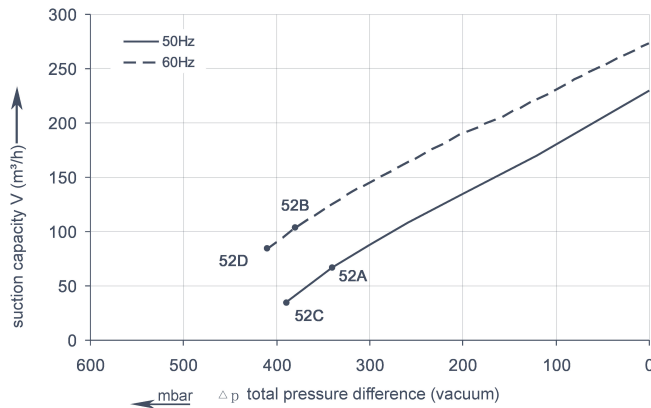
### FEATURES

- » Available from stock
- » Almost free of maintenance
- » Low power consumption
- » Oil free compression, no oil pollution in medium
- » Made of aluminum, very high corrosion resistance

### AVAILABLE ACCESSORIES

- » Air filters
- » Pressure / vacuum relief valves
- » Silencers
- » Non return valves
- » Air knives
- » Fittings

## PERFORMANCE CURVES



The performance curves are based on air at a temperature of 15 °C and an atmospheric pressure of 1013 mbar with a tolerance of +/- 10 %. The total pressure differences are valid for suction and ambient temperatures up to 25 °C. For other conditions please confer with us.

Each type can be applied both as vacuum pump and compressor in continuous operation over the total stated performance curve range. The motors are available as standard for the input voltage range of 50 and 60 Hz.

## SELECTION AND ORDERING DATA

### EB3 5230 & EB3 5240

Curve No.	Order No.	Fre- quency	Rated power	Input voltage		Input current		Permissible total differential pressure <sup>2)</sup>		Sound pressure level <sup>3)</sup>	Weight ca.
		Hz	kW	V		A		Vacuum mbar	Compressor mbar	dB(A)	kg
52A	EB3 5230	50	3.0	200D...240D	345Y...415Y	12.5D	7.2Y	-340	410	72	40
52B	EB3 5230	60	3.45	220D...275D	380Y...480Y	12.6D	7.3Y	-380	360	74	40
52C	EB3 5240	50	4.0	345D...415D	600Y...720Y	10.0D	5.8Y	-390	440	72	44
52D	EB3 5240	60	4.6	380D...480D	600Y...720Y	9.9D	5.7Y	-410	480	74	44



All EB3 and EB1 sidechannel blowers achieve the standards and norms of the low voltage directive (LVD)2006/95/EC, rotating electrotechnical motor EN 60034-1-2004, electromagnetic compatibility(EMC)EN55014-1/2,EN61000-2/-3/-4/-6.

1) Relief-valve are available for limiting differential pressure.  
2) Measuring-surface sound-pressure level acc. to DIN EN 21680, measured at a distance of 1 m. The pump is throttled to an average suction pressure, a hose is connected to the discharge side (compressor) / suction side (vacuum pump), but is not fitted with relief valves.

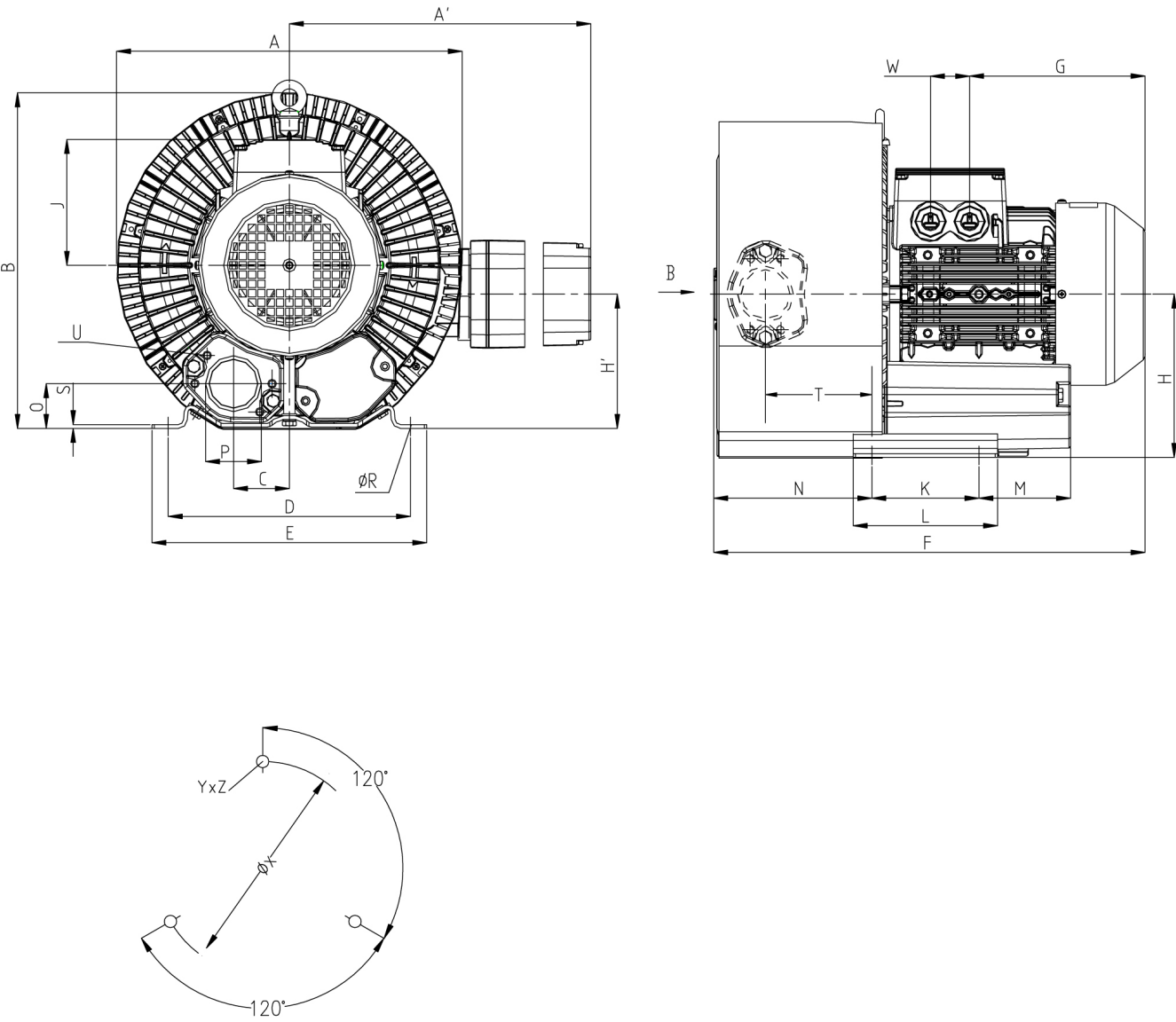
The motors are designed according to the DIN EN 60 034 / DIN IEC 34-1 and temperature class F.

For the three phase machines the tolerances are +/- 10 % for fixed voltage and +/- 5 % for voltage range.  
The single phase machines are designed with a +/- 5 % tolerances. If only 90 % of the maxium allowed pressure will be used for the continuousoperating then the allowed voltage range add to +/- 10 %.

The frequency tolerance is maximum +/- 2 %.

# EUROBLOWER

## DIMENSIONS IN MM



Curve No.	Type	A	A'	B	C	D	E	F	G	H	H'	J	K	L	M	N
52A / 52B	EB3 5230	372	411	371	60	260	295	465	190	175	144	135	115	155	98	171
52C / 52D	EB3 5240	372	411	371	60	260	295	499	224	175	144	135	115	155	98	171
Curve No.	Type	O	Ø P	Q	Ø R	S	T	U	V	V'	V1	V'1	Ø X	YxZ	X-holes	W
52A / 52B	EB3 5230	48	2"	83	14	4	116	M8 x 17	M32 x 1.5	M32 x 1.5	M32 x 1.5	M32 x 1.5	200	M8 x 20	51.5°/171.5°/291.5°	42
52C / 52D	EB3 5240	48	2"	83	14	4	116	M8 x 17	M32 x 1.5	M32 x 1.5	M32 x 1.5	M32 x 1.5	200	M8 x 20	51.5°/171.5°/291.5°	42